

Notes:

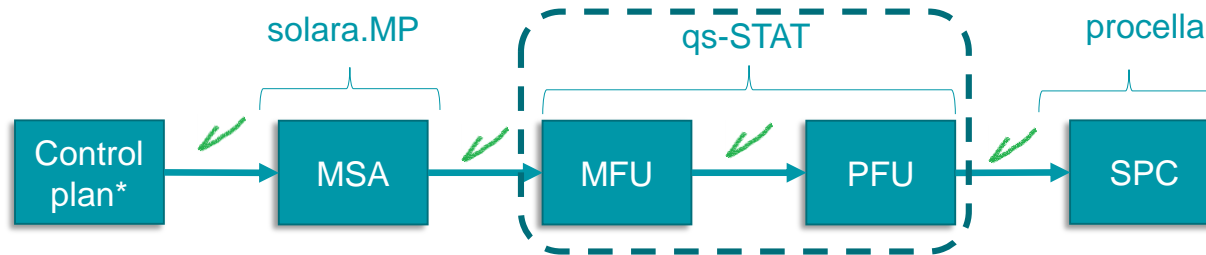


Introduction to the graphical user interface

Basic usage of qs-STAT

qs-STAT - Quick Overview

- Each product is used for specific purposes
- qs-STAT consists of 2 modules:
 - Sample Analysis (Machine capability)
 - Process capability analysis
- Procella and O-QIS are tools for Data input and/or SPC
- The user interfaces of the modules have comparable layouts

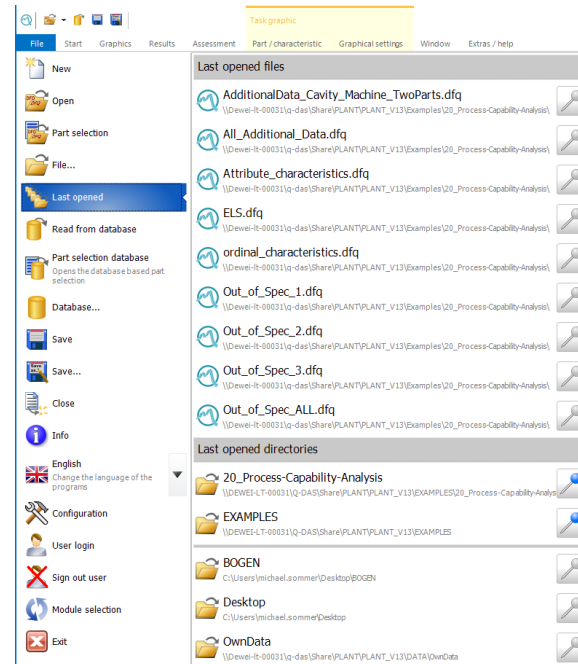


- Control plan is only one example out of many tools for this purpose

Notes:

File Ribbon

- The „File“ Ribbon shows the last used files and directories
- The „Configure“ submenu gives access to the main settings
- Language selector
- User login
- Module selection
- ...



Notes:

Graphical User Interface

Notes:

Quick Access Bar

Module & License

Task graphic
Q-DAS / TEQ - intern Zeitbegrenzung 90 Tage
Q-DAS qs-STAT ®

File Start Graphics Results Assessment Part / characteristic Graphical settings Window Extras / help

Ribbons

Tab Bar

Start Process Manager
Parts mask
Mask
Evaluation

Report preview
Print reports
Generate a PDF file from reports

Report with data selection (query)
Print report to PDF file
Bad characteristics

Print report
Reports in PDF format
PDCA Report

Process Man... Module Mask Evaluation Reports Desi...

Characteristics Statistics - Design 9
Parts / characteri...

Char.No.	Char.Descri.	\bar{x}	s	pot. Index	crit. Index	Overall eval.	Value chart Individuals	Histogram Individuals
1	Test 1	20.00453	0.0126	$P_{pk} = 0.84$	$P_{pk} = 0.77$	↓		
2	Test 2	14.067923	0.00124	$C_{pk} = 2.01$	$C_{pk} = 1.90$	↑		
3	Test 3	130.0392	0.0326	$C_{pk} = 1.79$	$C_{pk} = 1.42$	↑		
4	Test 4	0.504	0.361	$C_{pk} = \text{---} \text{915}$	$C_{pk} = 1.89$	↑		
5	Test 5	718.30	61.03	$C_{pk} = 1.07$	$C_{pk} = 0.81$	↓		
6	Test 6	0.02527	0.0135	$C_{pk} = 1.35 \text{ 15}$	$C_{pk} = 1.48$	↑		
7	Test 7	0.00829	0.00467	$C_{pk} = 1.51 \text{ 15}$	$C_{pk} = 1.58$	↑		
8	Test 8	30.00688	0.0397	$P_{pk} = 1.54$	$P_{pk} = 1.52$	↑		
9	Test 9	19.9973	0.0637	$P_{pk} = 1.83$	$P_{pk} = 1.72$	↑		
10	Test 10	64.916	1.109	$C_{pk} = 1.50$	$C_{pk} = 1.48$	↑		
11	Test 11	4.491	0.508	$C_{pk} = 1.64$	$C_{pk} = 1.63$	↑		
12	Test 12	26.4991	0.125	$P_{pk} = 0.92$	$P_{pk} = 0.87$	↓		
13	Test 13	28.54925	0.0492	$C_{pk} = 2.03$	$C_{pk} = 1.70$	↑		

Working area

Assistant

Form sheet - Design 4

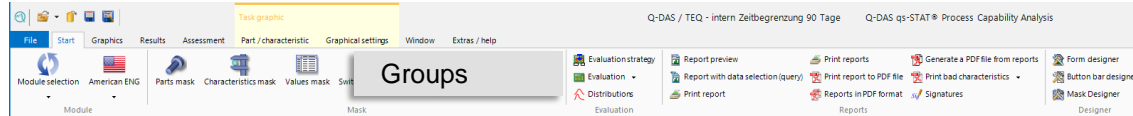
Evaluation complete
QDAS_DATA_001
TEST_ALL.dfg
SuperUser
Q-DAS Process Capability (01/2020)

Status Line

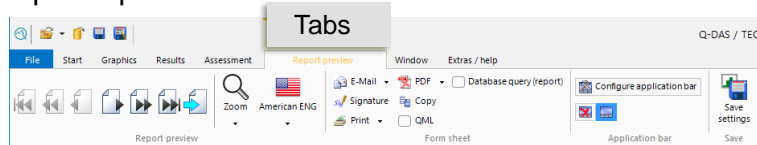
Notes:

Context sensitive ribbon bars

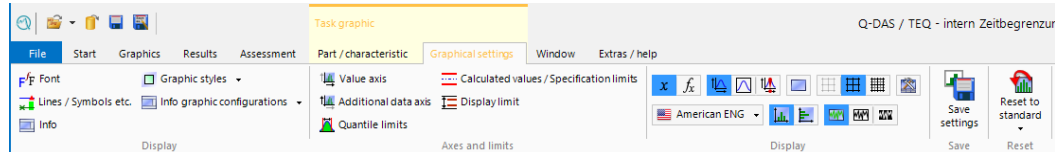
- Open data set:



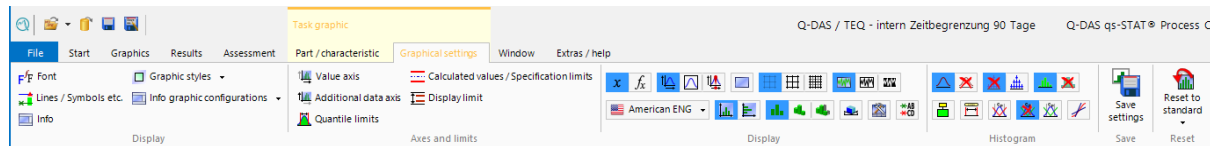
- Open report:



- Open graphic (Value plot)



- Open graphic (Histogram)

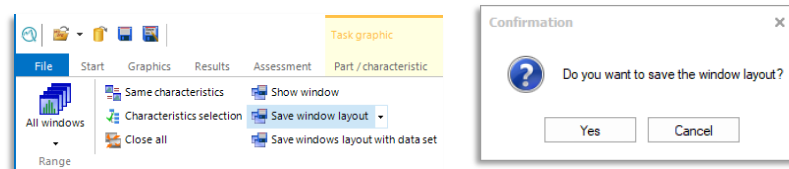


Working Area

- The layout of the working area can be customized. The user-settings will be saved to the user profile.
- Group and user depending layouts can be set and changed by the administrator
- How to set a user depending layout:
 - Open a file (e.g. Test_All.DFQ)
 - Open the graphics which should be the new standard
 - Select | Window | Save window layout and confirm

Notes:

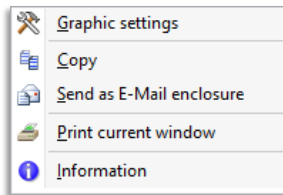
Das Standardfenster findet man unter Ergebnisse/Kennwerte Merkmale/Darstellung 6



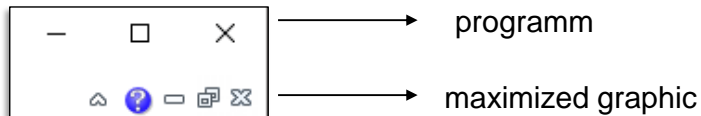
Notes:

Usage Hints

- The active (clicked) graphic determines the usable icons
- To close all graphics does not close the dataset
- Most graphics and formsheets provide a right click menu



- If a graphic is maximized the top icons on the right are program dependent and the bottom ones are for the graphic itself



- The „F1“ key provides a contextual help for the active graphic, formsheet or function
- On our website you will find further detailed documentation:
<https://www.Q-DAS.COM>

