

Notes:



Report with qs-STAT

Tools to create custom and standard reports

Report with qs-STAT

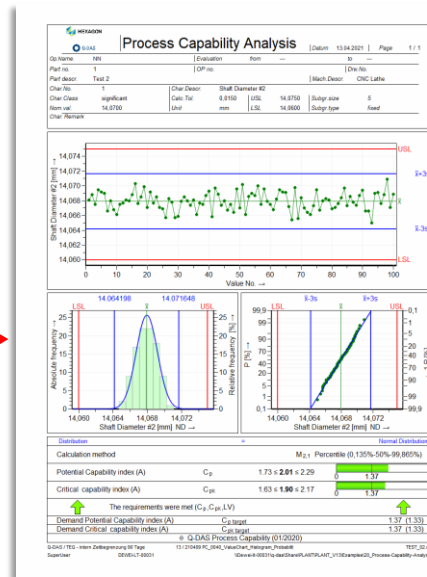
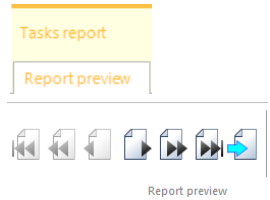
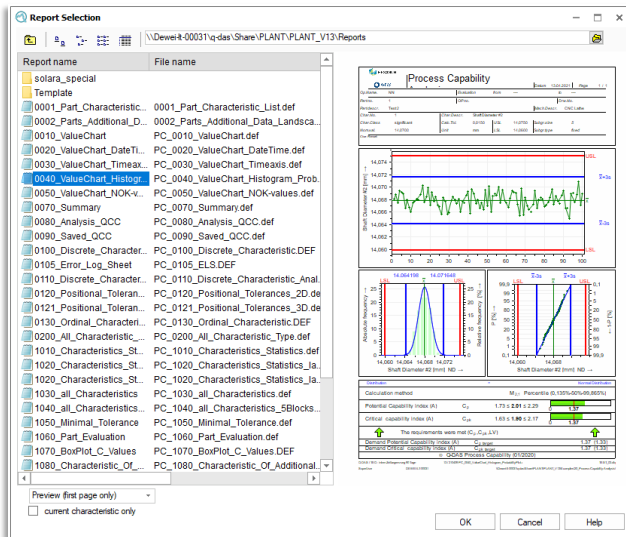
- [Report preview](#)
- [Printer settings](#)
- [Print Reports from preview](#)
- [Print graphics and form sheets directly](#)
- [Create a unique report](#)
- [Save graphics as files](#)

Notes:

Report preview

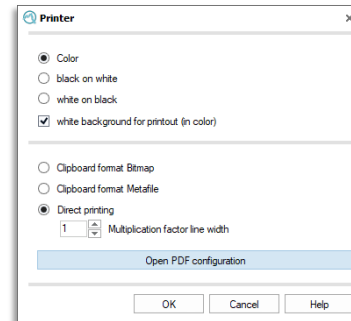
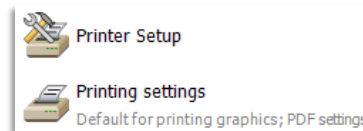
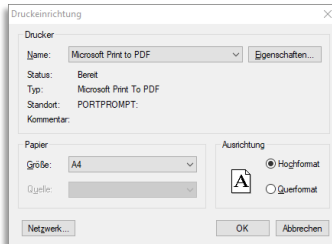
- In | Start | Reports | Report preview all reports for a specific module are selectable
- This preview is limited to 49 pages (after clicking OK all pages can be displayed)
- Navigate in the report within the tab | Report preview |, the mousewheel or Buttons if more than 1 pages are available

Notes:



Printer settings

- Without settings the windows standard printer is taken for printing
- If a special printer is needed go to | File | Configuration | Printer | Printer setup to access the standard (Windows –) Printer settings
- If the report needs program specific settings go to | File | Configuration | Printer | Printing settings
 - PDF configuration
 - Clipboard format for slower printers
 - Color mode
 - Line thickness (to correct printing errors)

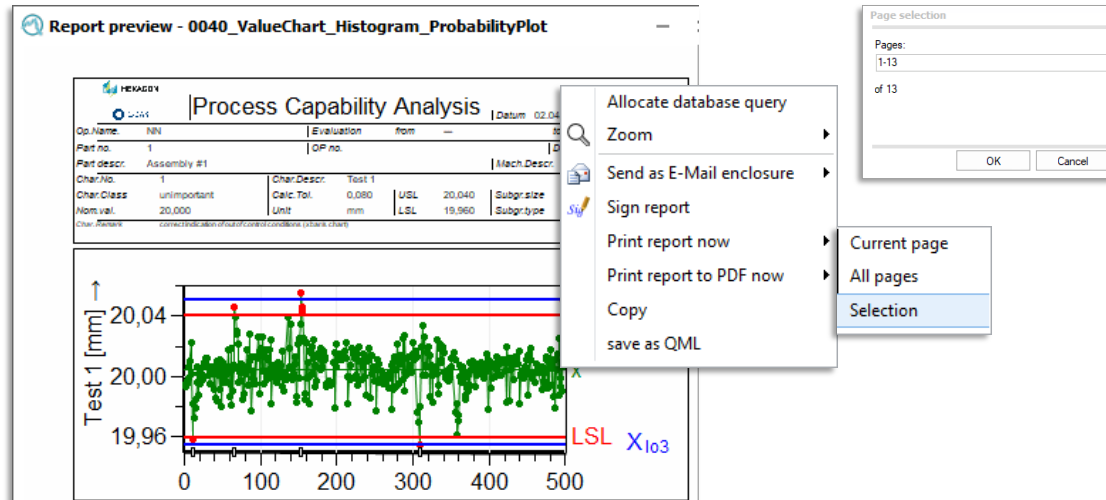


Notes:

Notes:

Print reports from the preview

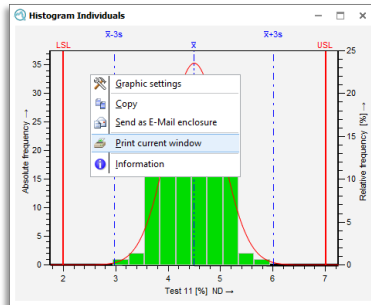
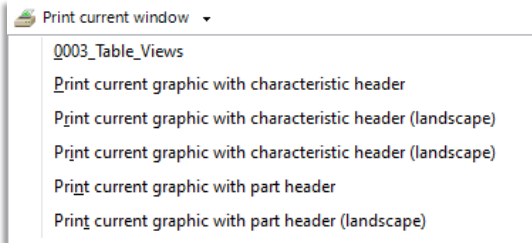
- It helps to see what one is printing. Therefore the preview can be used accordingly
- The selection option can be used to only print specific pages: 1,3-5,8
- The zoom option allows to enlarge the view (can be set permanently by „save settings“)



Direct printing

- Right click to a graphic, list or form sheet offers the option to print it directly
- A special form sheet will automatically include this window when printing is selected
- If the window (or all windows) should be printed directly go to | Window |

Notes:



Form sheet - Design 3

Part no.	1	Part descr.	Assembly #1
Char.No.	11	Char.Descr.	Test 11
Drawing Values		Collected Values	
T _m	Graphic settings	4.50	\bar{x} 4.491
LSL	3.2	s	0.508
USL	5.8	X _{50%}	4.491
T	2.6	X _{10%}	2.967
Characteristics C:	Print current window	150	X _{90%}
	Information	150	6s 3.048
		0.00000%	p<T> 99.99991 %
	f _{n -USL}	0.00000%	p>USL 0.00004%
	f _{n <LSL}	0.00000%	p<LSL 0.00005%
Model distribution Normal Distribution			
Distr. regress. coeff.	f _{50%}	0.99651561	
Distr. regress. coeff.	f _{25%}	0.95753437	
Calculation method M _{2.1} Percentile (0.135%-50%-99.865%)			
Potential Capability index	C _p	1.64	
Critical capability index	C _{pk}	1.63	
The requirements were met (C _p , C _{pk} , LV)			
Demand Potential Capability index	C _{p target}	1.00	
Demand Critical capability index	C _{pk target}	1.00	
© Q-DAS Process Capability (01/2020)			

Create a unique report

- Graphics, form sheets and tables can be copied to e.g. Word or Excel
- The window is copied to the clipboard and can be used everywhere
- If the data itself is more important and you have list which should be copied as values, go to Window | Window | Copy contents

Notes:

Results Assessr

individual values

- all characteristics
- all characteristics - all types
- Individuals of all characteristics, rotated

Form sheet - Design 1

Part no.	1	Part descr.	Assembly #1
Char No.	11	Char. Descr.	Test 11
Drawing Values			
T _m	4.5		
LSL	2.0	X _{min}	3.2
USL	7.0	X _{max}	5.8
T	5.0	R	2.6
		n<T>	150
		n>USL	0
		n<LSL	0
		n _{off}	150
		n _{fix}	150

Statistics

\bar{x}	4.491
$\bar{x}-3s$	2.967

Context menu:

- Graphic settings
- Copy
- Send as E-Mail enclosure
- Print current window
- Information

THIS is my unique report

Part no.	1	Part descr.	Assembly #1
Char No.	11	Char. Descr.	Test 11
Drawing Values			
T _m	4.5		
LSL	2.0	X _{min}	3.2
USL	7.0	X _{max}	5.8
T	5.0	R	2.6
		n<T>	150
		n>USL	0
		n<LSL	0
		n _{off}	150
		n _{fix}	150

Statistics

\bar{x}	4.491
$\bar{x}-3s$	2.967

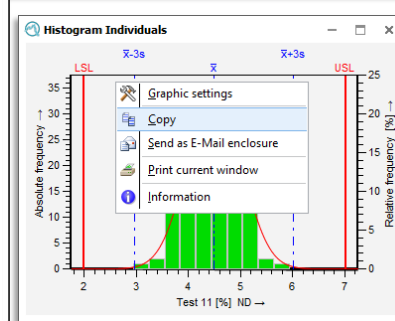
Context menu:

- Graphic settings
- Copy
- Send as E-Mail enclosure
- Print current window
- Information

Copy contents

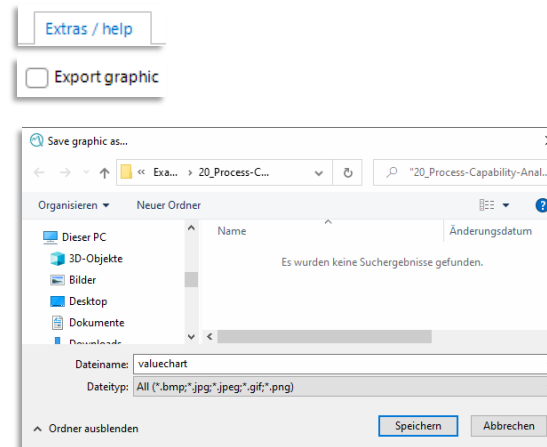
Individuals of all characteristics, rotated

Part no.	1		
i	Test 1	Test 2	Test 3
1	19,993	14,0681	130,04
2	19,995	14,0688	129,98
3	19,997	14,0675	130,02
4	19,995	14,0695	130,03
5	19,999	14,0692	130,02



Save graphics as files

- Graphics are quite useful to explain difficult facts and can be exported
- Supported filetypes: *.PNG, *.BMP, *.JPG, *.EMF und *.WMF
- The Dialog is located in | Extras/help | Extras | Export graphic
- The graphic will be exported „as is“. If you intend to use it as a big picture in a presentation it is recommended to enlarge the picture within the software



Notes: